



INVESTING IN THE FUTURE OF OUR STUDENTS

THE WESLEY COLLEGE FOUNDATION



WESLEY COLLEGE

MELBOURNE AUSTRALIA • SINCE 1866

A True Education

FOREWORD

The Wesley community has played a vital role in supporting the progress of our College over its 152 year history. Without the passion and commitment from parents, alumni and friends of the College, Wesley would not be where it is today.

Looking to the next 150 years and beyond, such continued support is critical to our ability to deliver a rich, academic and liberal education.

The Wesley College Foundation, established in 1978, provides many opportunities for the community to offer their support and make tax-deductible donations to vital fundraising initiatives.

We invite you to become involved in the next chapter of Wesley's success. Your support will make a vast difference to the lives of Wesley students both now and into the future.



Marianne Stillwell
President Wesley College Council



Nicki Isaacs nee Lefkovits (OW1990)
Chair Wesley College Foundation



WHY THE FOUNDATION NEEDS YOUR SUPPORT

As we reflect on the past 152 years of the College, we are proud to have established ourselves as a leading, coeducational school in Melbourne, enriching the lives of thousands of students.

At the heart of our success is our commitment to providing a *True Education*, encapsulated in the timeless principles of learning - to know, to do, to live with, and to be.

It is through this unique approach to learning that we prepare our students for their future, equipping them with the knowledge and values to achieve success in their personal and professional lives, and enabling them to contribute to creating a better world.

As we look to the future, the philanthropic support of our current and past parents, alumni and friends of the College is critical

to ensuring that we continue to deliver a *True Education*, and to enable our next 150 years to be equally successful.

You may wonder why the College needs your support. We receive fees and Government grants which contribute to staff salaries and operational costs; however, this alone is not enough to support the long-term sustainability of the College.

Your generous help will ensure that our students reach their full potential, and are ready to thrive in a changing world.

PAST FUNDING IS MAKING AN IMPACT TODAY

Over the last 15 years, the College has invested more than \$200m in the development and enhancement of school buildings and facilities. Generous donations and bequests from our community have assisted in funding these facilities, which our students benefit from today.

Major developments and programs have included:



Clunes residential campus establishment

Clunes is an integral part of the Year 9 experience at Wesley, providing a life-changing opportunity for students to develop independent living and learning skills, a deeper understanding of community and the environment, through an 8 week journey of self-discovery and co-operative interaction.



Coates Pavilion redevelopment and new College Sports Centre

Glen Waverley

Students have access to a very diverse range of sporting activities, providing an ideal environment in which to develop their skills and cultivate a strong sense of teamwork. The Coates Pavilion has become a focal point, not only for sports, but also for key educational and social activities at the College.

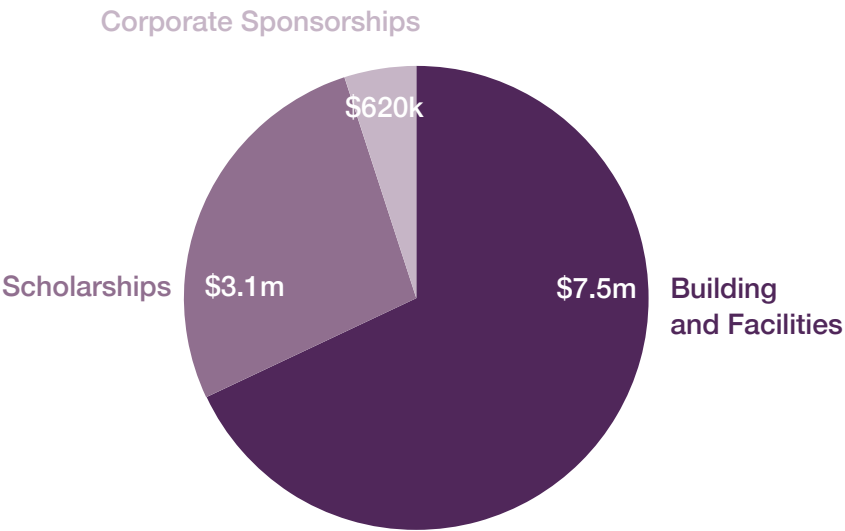


New Music School, Menzies Wing and Adamson Hall

St Kilda Road

This state-of-the-art facility underpins the College’s highly valued and well-renowned performing arts program, providing a first-rate environment for students to explore their creative and artistic talents.

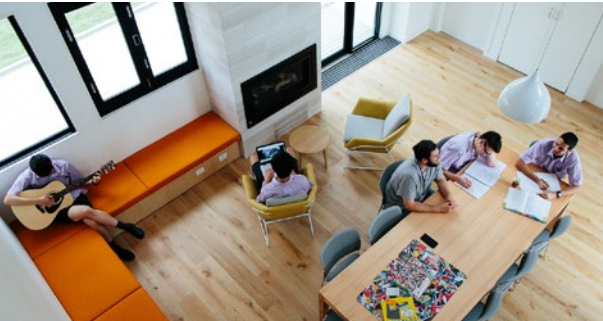
\$11.2m
Total funds raised 2015–2018



Science laboratory upgrades

All Campuses

Extensive improvements to our science facilities have enhanced learning opportunities and increased enthusiasm and interest in our science program. These improvements emphasise our key strategic focus on teaching and learning of Science, Technology, Engineering and Mathematics subjects (STEM).



***Learning in Residence* boarding facility**

Glen Waverley

The launch of our *Learning in Residence* program, enabled through the support of our community, has added a unique dimension to the school. This dynamic program provides a coeducational environment that facilitates real-life learning within a culturally and linguistically diverse community.



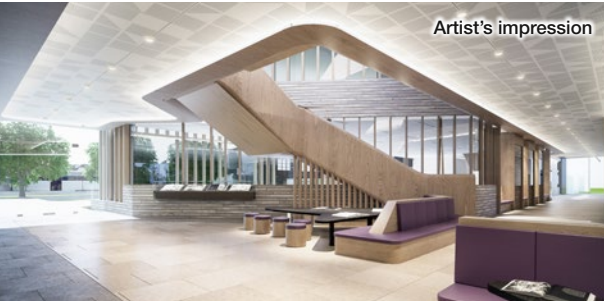
Scholarships program

Support from our community has been fundamental to the expansion of our scholarships program, which transforms the lives of more than 250 students per year - students who may otherwise not be able to benefit from a Wesley education.

YOUR HELP NOW WILL MAKE A BIG DIFFERENCE TOMORROW

We are actively seeking support from our community for a range of fundraising projects, and we encourage you to participate in these.

Key projects include:



Middle School redevelopment *Glen Waverley*

Cost:	Fundraising target:
\$20m	\$5m

This state-of-the-art complex will include new classrooms, a new language centre, campus library, Charlaftis Family Lecture Theatre, student-centred Year 9 Precinct, Chapel, design and STEM classrooms to support students during their essential Middle School years and enhance their learning experience.



Wesley Boathouse redevelopment

Cost predicted:	Fundraising target:
\$2.5m	\$2.5m

Rowing is an integral part of Wesley's sporting traditions, and very popular among our Senior School students. A redesign and expansion of our iconic Boathouse will enable growth and ensure the continued success of our rowing crews, as well as serving as a College educational facility with integrated technology.



Arts Precinct refurbishment *St Kilda Road*

Cost:	Fundraising target:
\$2m	\$1m

Our innovative Arts program is a key element of our rich educational program. This significant project relocates our Visual Arts department into the completely refurbished heritage bluestone building of the former Royal Victorian School for the Blind, in order to optimise space for learning and exhibition.



Fitchett Hall redevelopment *Elsternwick*

Cost:	Fundraising exceeded:
\$800,000	\$250,000

Fitchett Hall has a proud history as the heart of the Elsternwick campus. This renovation was needed to enlarge and enhance this multipurpose space, which is of great benefit to our students, accommodating many diverse activities.



Wesley Scholarships program

Fundraising target:
\$1m annually

At Wesley, we understand that it takes opportunity in order for talent to emerge. Our scholarships program provides life-changing opportunities for students across a wide range of areas of academic and cocurricular learning, with new scholarships now available for *Learning in Residence*. Your support is invited to increase the number of scholarships available to students who may otherwise be unable to enjoy the benefits of a Wesley education.

THANK YOU FOR INVESTING IN OUR STUDENTS' FUTURES

By supporting the Wesley College Foundation, and irrespective of the amount of your contribution, you are helping to continue Wesley's legacy of a *True Education* and investing in the future of our students.

Your tax-deductible donation, or a bequest in your Will, can ensure that current and future generations of students continue to benefit from the unique learning opportunities at the College.

When you make a donation you may choose to have your contribution recognised individually or as a family. Alternatively, you may decide to donate anonymously.



INVESTING IN THE FUTURE OF OUR STUDENTS

The Wesley College Foundation

For further information about how you may support the Foundation, or to discuss specific giving and naming opportunities, please contact:

Jack Moshakis (OW1973)

Executive Director

03 8102 6385

jack.moshakis@wesleycollege.net

Debra Stiebel

Bequests, Donor Relations and
Fundraising Manager

03 8102 6121

debra.stiebel@wesleycollege.net

www.wesleycollege.net